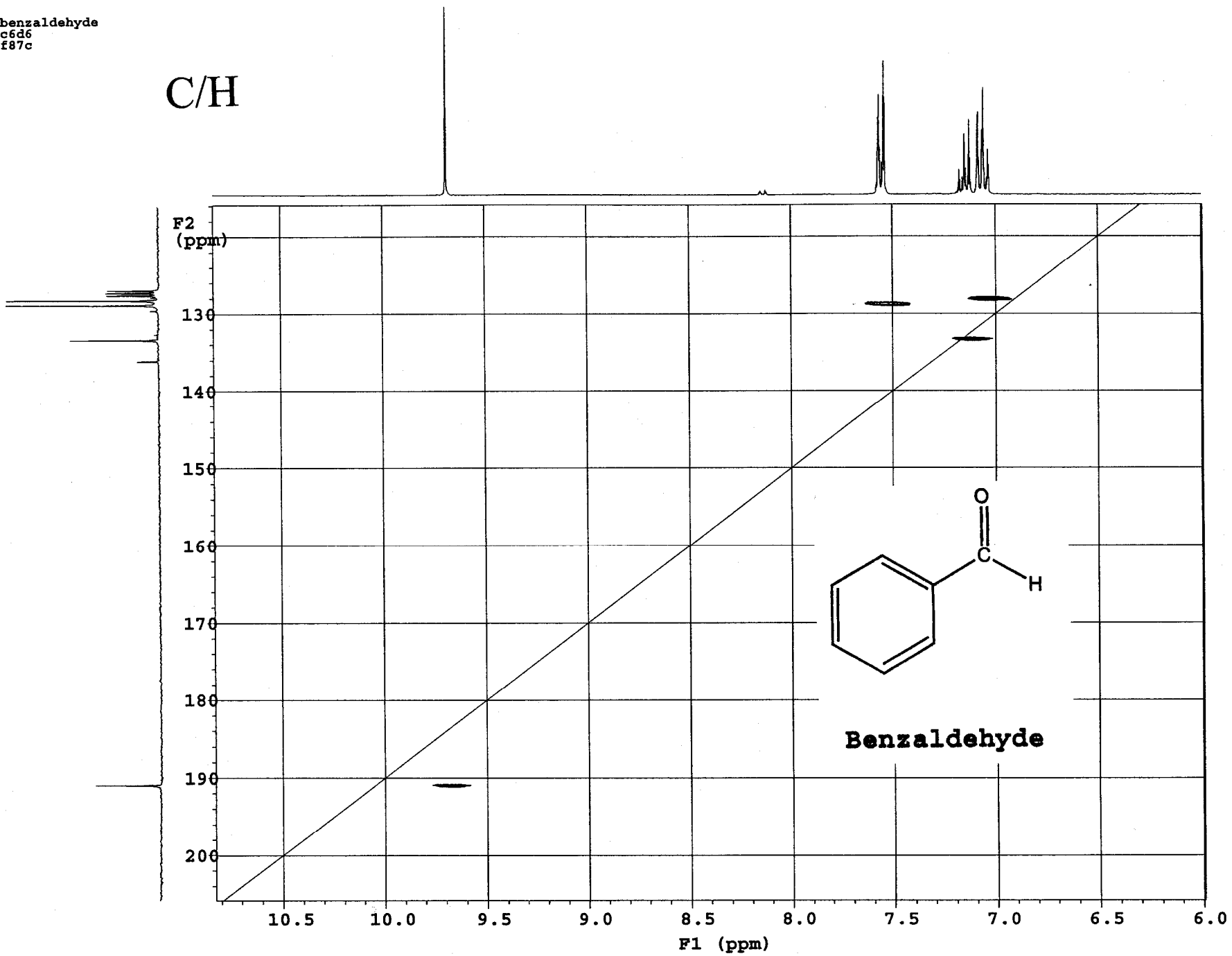


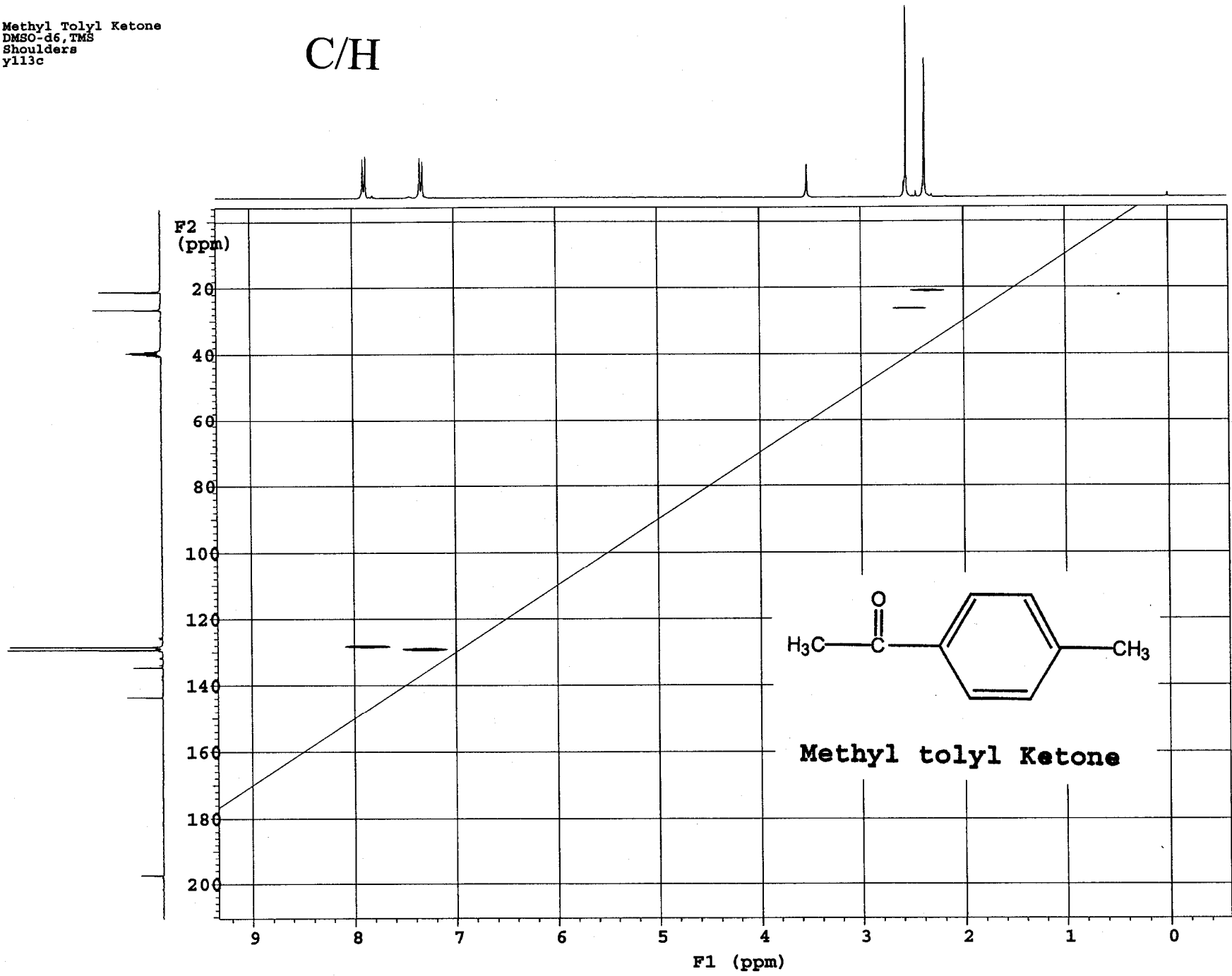
benzaldehyde
c6d6
f87c

C/H

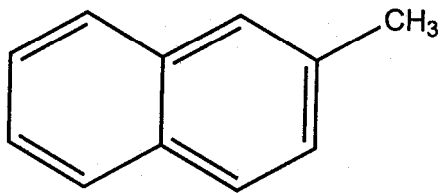


Methyl Tolyly Ketone
DMSO-d6, TMS
Shoulders
y113c

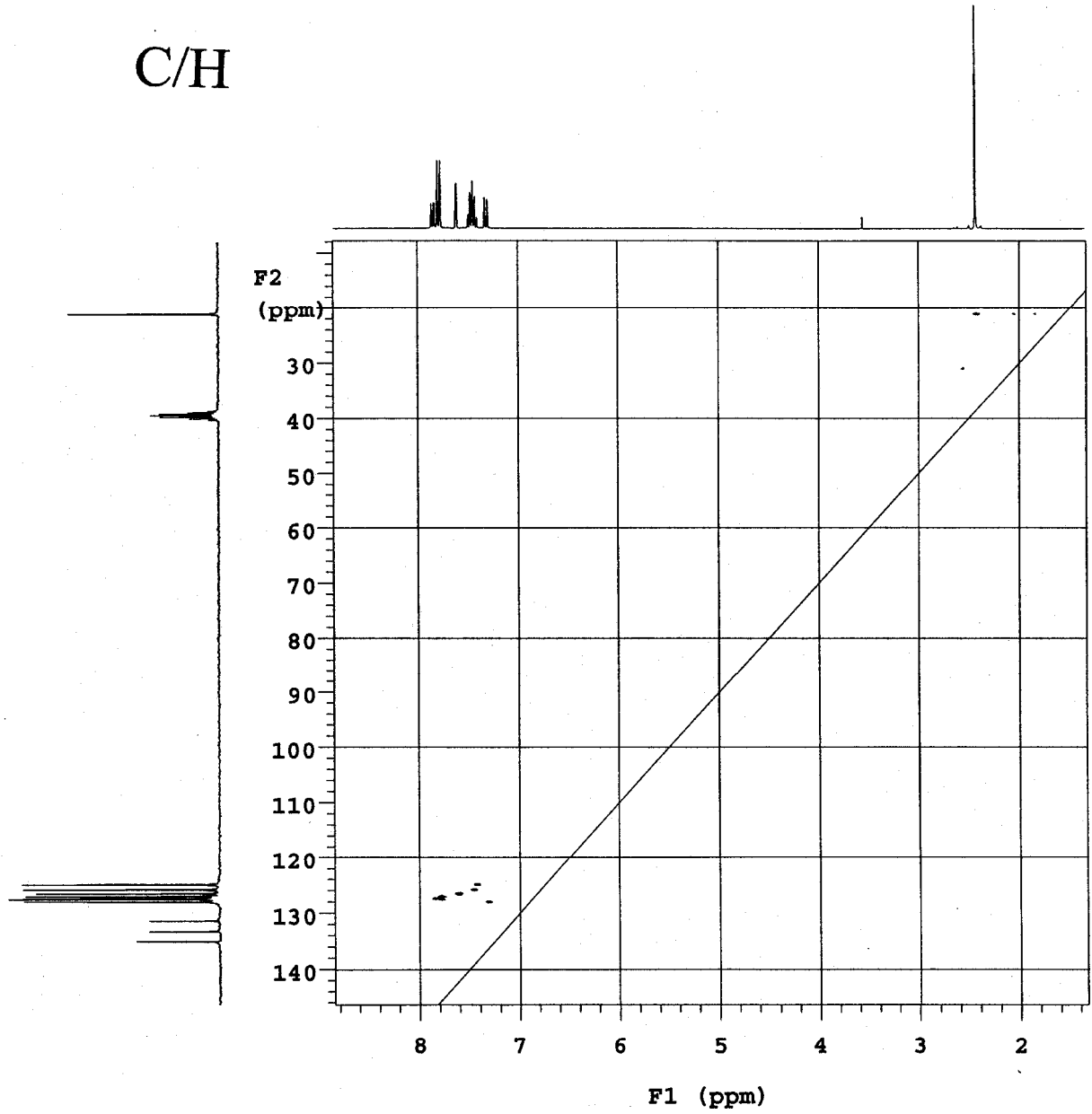
C/H

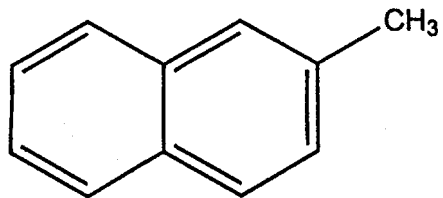


C/H

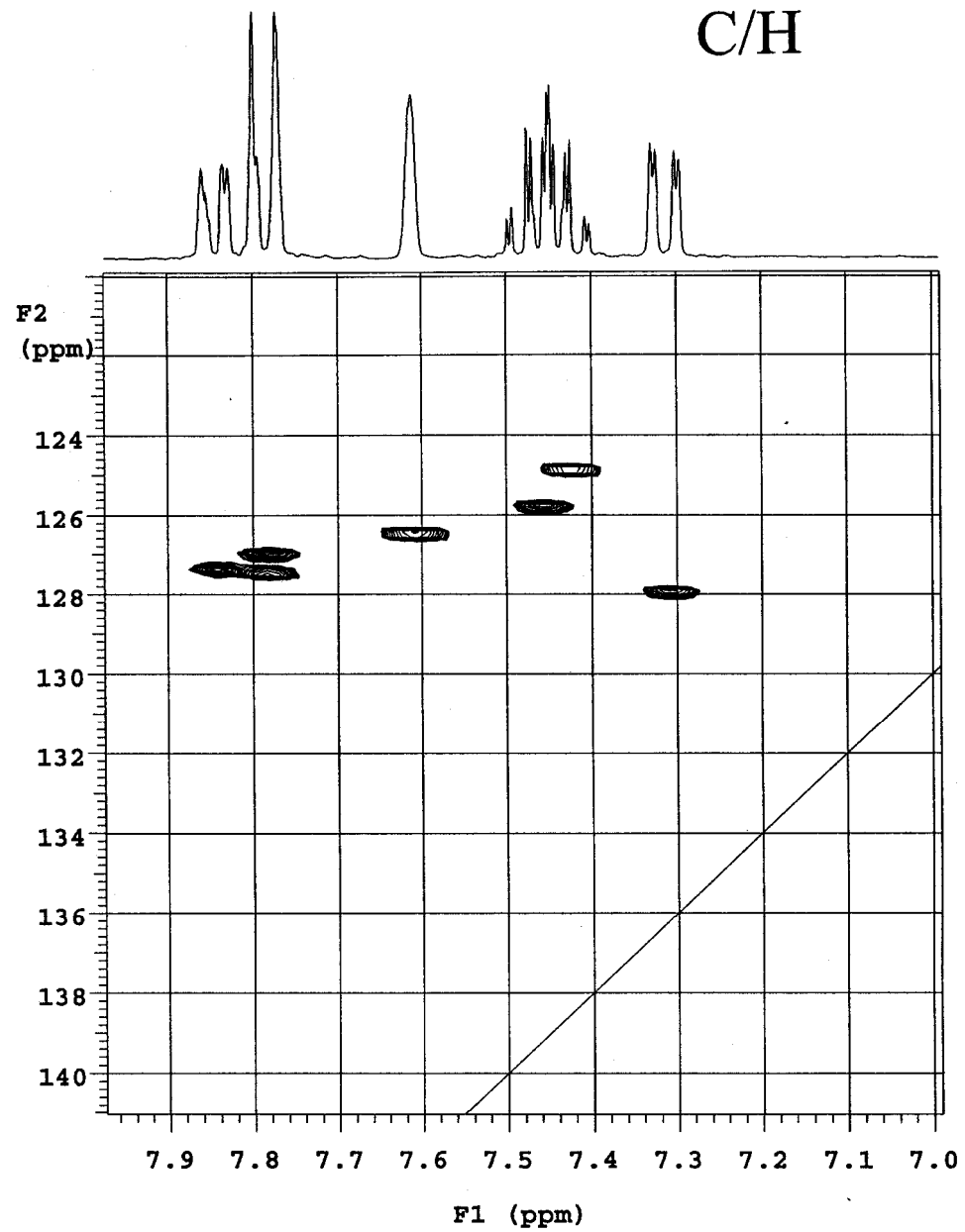
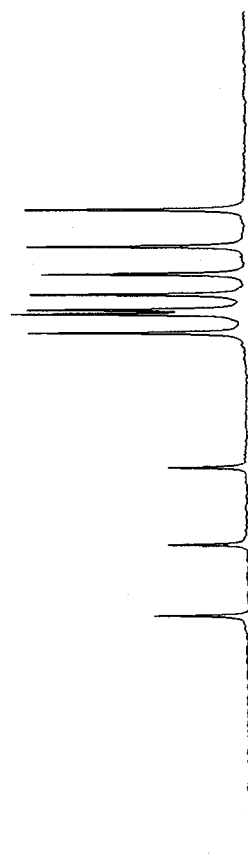


2-Methylnaphthylene



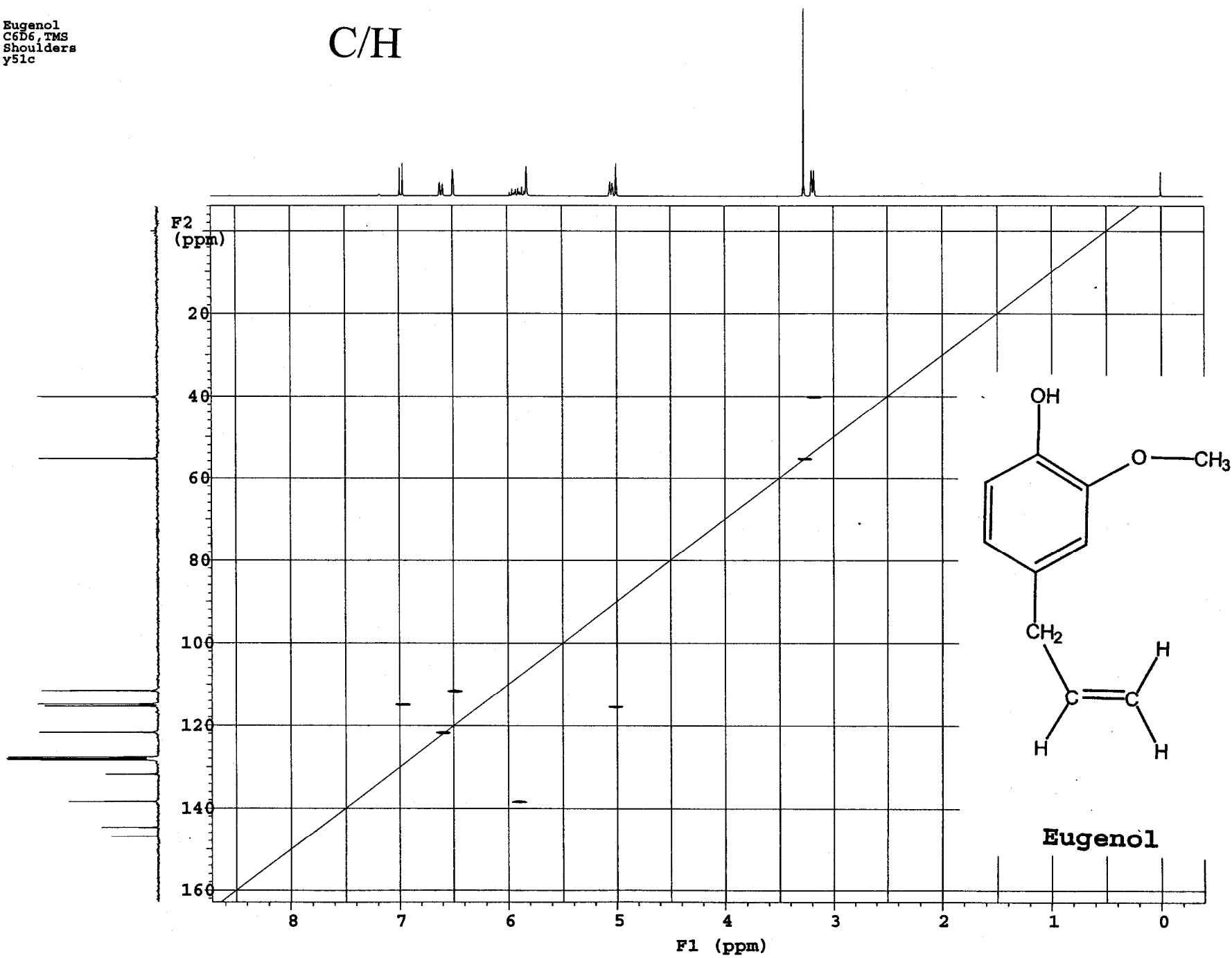


2-Methylnaphthylene



Eugenol
C6D6, TMS
Shoulders
y51c

C/H



Camphor
C6D6, TMS
Shoulders
y21c

C/H

