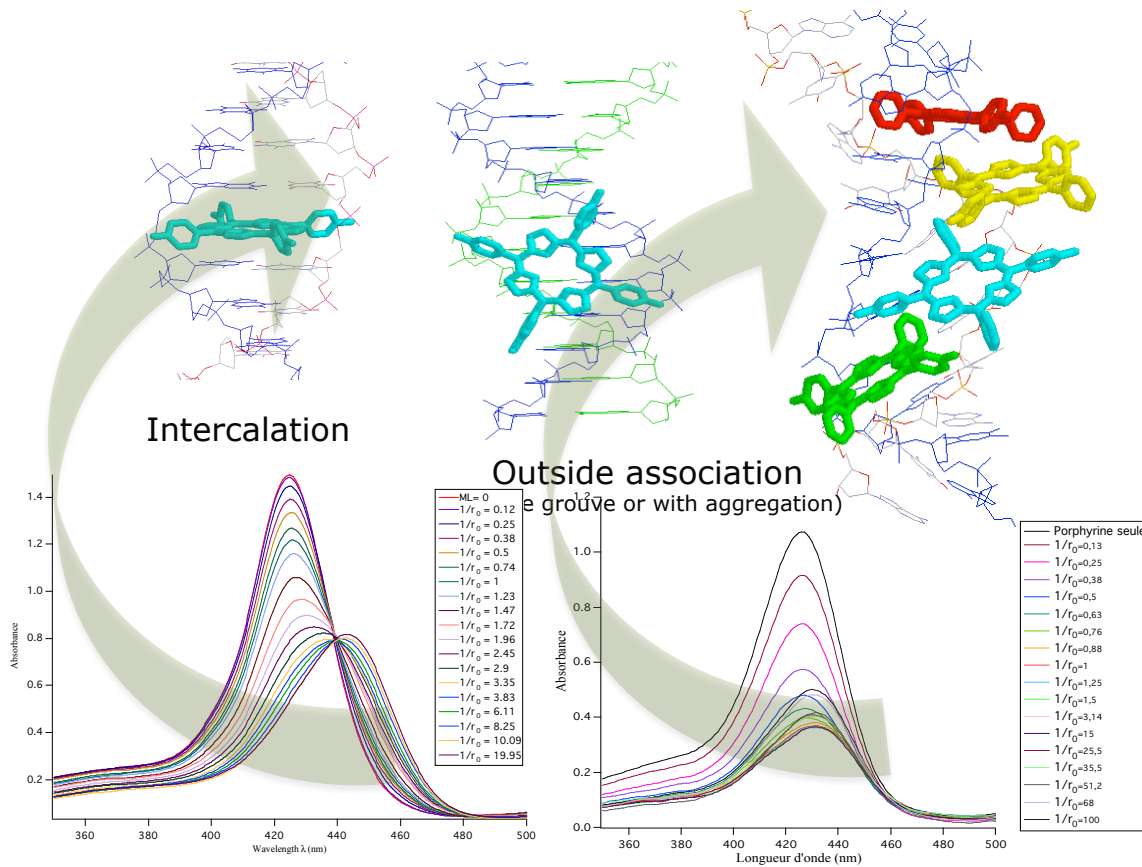
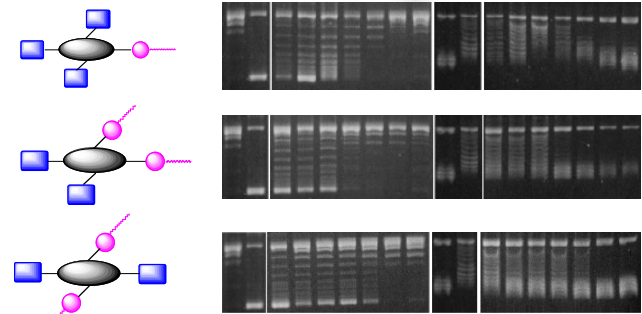


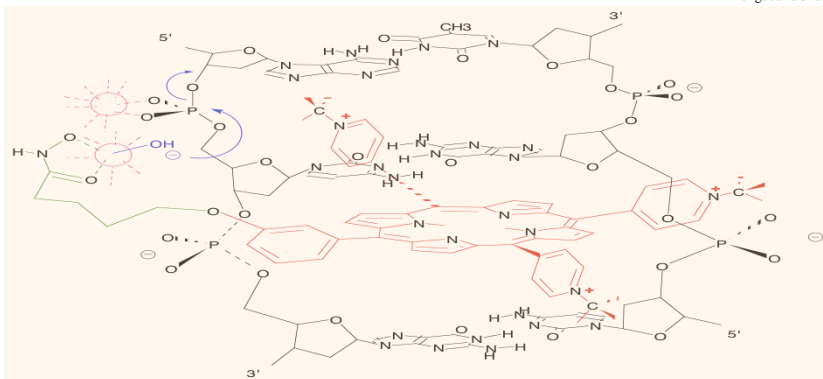
Artificial nucleases for DNA, RNA.



topoisomerization



The nature of the coordination site
Influence nuclease activity



The mechanism

Incubation time		24 hours						48 hours							
Porphyrin	Form	C	-	Pr	Sm	Eu	Gd	Tb	C	-	Pr	Sm	Eu	Gd	Tb
		[Gel image]						[Gel image]							
		[Gel image]						[Gel image]							
		[Gel image]						[Gel image]							